

# BISPHENOL A

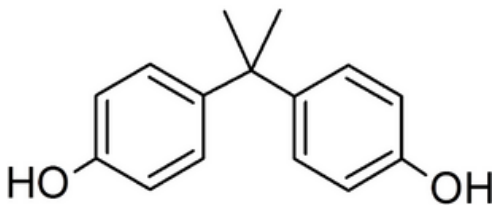


SAFE SUSTAINABLE SOLUTIONS

## Analytical approach for Bisphenol A and food contact material migration

Bisphenol A (BPA) is a chemical commonly used in plastic and resins production. It is mainly present in **polycarbonate**, which is used for the manufacture of packaging, containers and various components. In addition, BPA may also be present as an unreacted monomer in the production of **BADGE** (diglycidyl ether bisphenol A) used in the manufacture of **epoxy resins** used to coat the inside of cans.

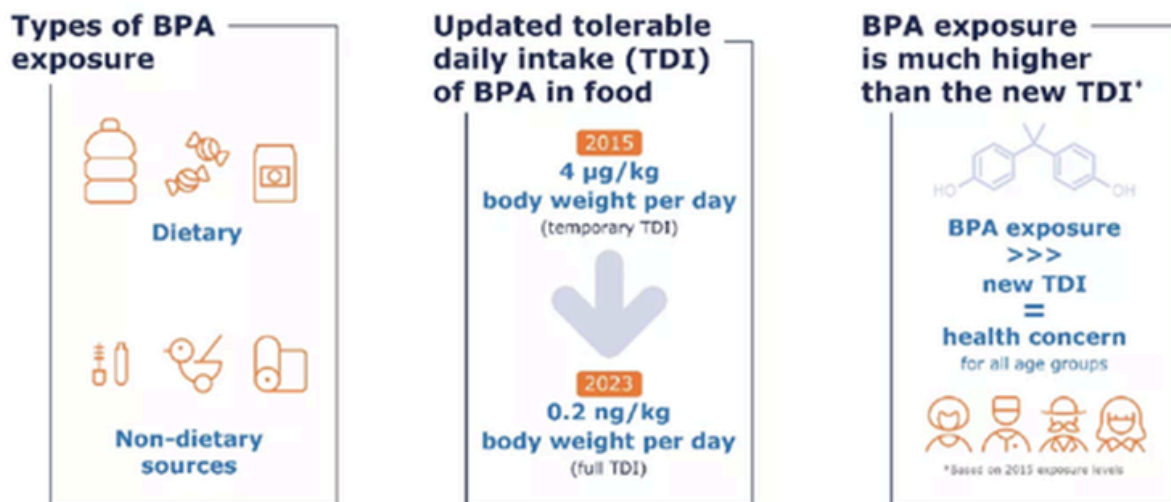
In other matrix, we can find the BPA presence mainly because of the contamination; it happens with paper and cardboard due to the presence of thermic paper in recycling process.



BPA in food containers, albeit in small amounts, can actually **migrate into food** and beverages; therefore EFSA (European Food Safety Authority) experts periodically update its safety assessment.

In 2015 EFSA introduced a temporary tolerable daily intake (TDI) for BPA of 4 µg/kg body weight per day, which led to the introduction of a Specific Migration Limit (SML) in EU Regulation 10/2011 of 0,05 mg/kg food.

[A new TDI for Bisphenol A of 0,2 µg/kg body weight per day was recently established, lowering the threshold by 20 000 times from the previous one.](#)



[With the new Regulation \(EU\) 2024/3190, the European Commission introduces a ban on the intentional use of BPA in the production of MOCA.](#)

### FOOD CONTACT CENTER

HEADQUARTERS  
VIA DEL REDOLONE 65, 51034 SERRAVALLE PISTOIESE

+39 0573 245244

SALES@FOODCONTACTCENTER.COM

WWW.FOODCONTACTCENTER.COM



### FOOD CONTACT SERVICES

LEGAL AND ADMINISTRATIVE HEADQUARTERS  
VIA ALDO MORO 16 - 25124 BRESCIA

+39 030 3457131

FCS@FOODCONTACTSERVICES.COM

WWW.FOODCONTACTSERVICES.COM

# BISPHENOL A



SAFE SUSTAINABLE SOLUTIONS

## THE NEW REGULATION (EU) 2024/3190

Until now, the use of BPA was only prohibited in plastic packaging for young children, infants and thermal paper. The new regulation introduces four important changes:



The **use of BPA is prohibited** in all packaging and in all applications that come into contact with food, regardless of their intended use.



The scope of application covers **plastic packaging, inks, rubbers, silicones, ion exchange resins, adhesives, paints and coatings**.



FCMs, manufactured using another bisphenol or a derivative of a bisphenol must **not contain residual BPA**.



The use of **hazardous bisphenols other than BPA** or **hazardous bisphenol derivatives** in the manufacture of MOCA is **prohibited**.

The Regulation provides for **exemptions** for:

- ✓ Epoxy-based paints and coatings used for food tanks with a capacity exceeding 1000 litres.
- ✓ Manufacture of polysulfone filtration membrane assemblies.

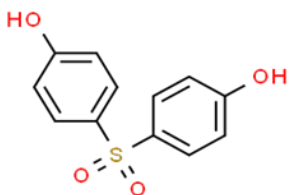
In both cases, however, it is required that the migration of BPA into food be undetectable.

A **transitional period** of varying duration has been provided for, depending on the use of the object, starting from the date of entry into force of the measure.

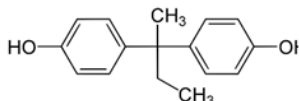
Those who use BPA or bisphenols must provide the commission with a list of substances they intend to use instead (Art. 7).

## OUR SOLUTION

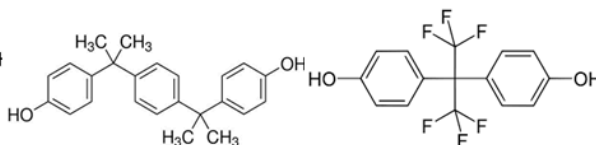
- Verification of **residual Bisphenol A content** with a **detection limit of 1 µg/kg** as required by REGULATION (EU) 2024/3190.
- **Screening for Bisphenols** as required by REGULATION (EU) 2024/3190 (Article 5, Annex I).
- Verification of the **migration of Bisphenol A and its salt**, with a detection limit of 1 µg/kg.



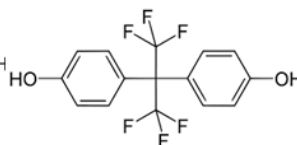
Bisphenol S



Bisphenol B



Bisphenol P



Bisphenol AF

And many more...

Rev.1 21/07/2025

The Laboratory Management

### FOOD CONTACT CENTER

HEADQUARTERS  
VIA DEL REDOLONE 65, 51034 SERRAVALLE PISTOIESE

+39 0573 245244

SALES@FOODCONTACTCENTER.COM

WWW.FOODCONTACTCENTER.COM



### FOOD CONTACT SERVICES

LEGAL AND ADMINISTRATIVE HEADQUARTERS  
VIA ALDO MORO 16 - 25124 BRESCIA

+39 030 3457131

FCS@FOODCONTACTSERVICES.COM

WWW.FOODCONTACTSERVICES.COM